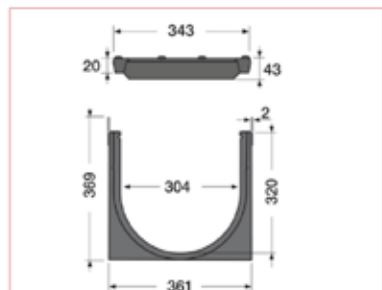
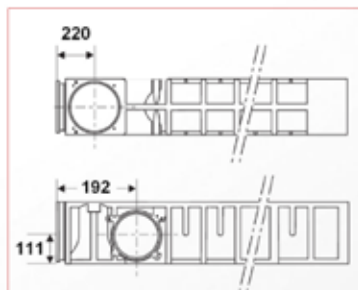
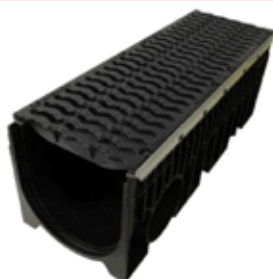


# Kenadrain I Channel width 300, class D400

Code: DR302DF



EN1433



## ■ FUNCTION:

This product permits to drain run-off water with gratings of length 1000 mm, of class D400 complying with the standard NF-EN 1433, holding the CE marking, assembled via a male/female connection system with locking

## ■ DESCRIPTION:

It is comprised of:

- an injected recycled polypropylene black body
- two galvanized steel edges.
- two black cast iron gratings class D400
- 4 locking systems with bolt per grating

## ■ ACCESSORIES:

To connect the channels to the underground network:

- PVC end caps (Ø 250) and verticals outlets (Ø200 or Ø315)
- EKSO sump units manufactured also in PVC

## ■ CHARACTERISTICS:

Resistance class: D400

Effective width: 304mm

Effective depth: 320mm

Grating type: Cast iron

Drainage surface: 1202 cm<sup>2</sup>/ml

Hydraulic section: 874,3 cm<sup>2</sup>

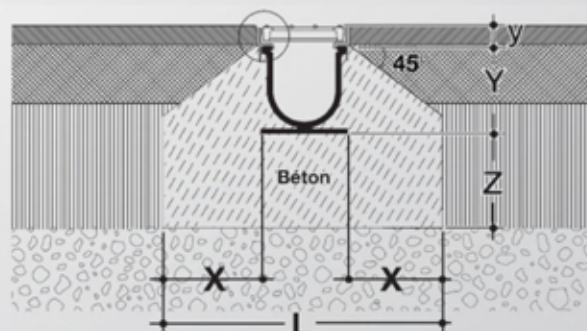
Opening dimensions: 17.8 / 300 mm

Weight: 48,5 KG

## ■ IMPLEMENTATION:

X = 200 mm; L = 760 mm

Z = 200 mm; Y = 340 mm; y = 35 mm



## ■ QUALITY- ENVIRONMENT:

ISO 9001  
ISO 14001  
ISO 50001  
BUREAU VERITAS  
Certification



DATE: October 2013