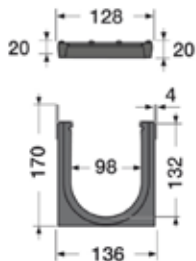
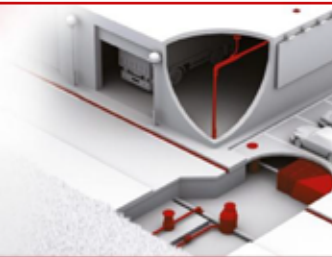
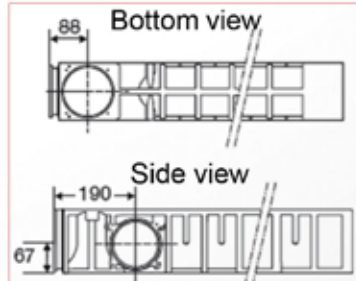
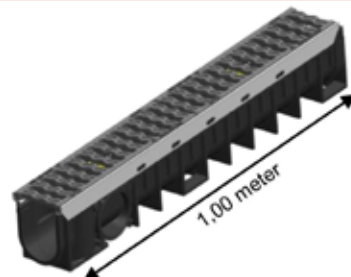


Kenadrain I Channel width 100 depth 2 with cast iron gratings class D400

Code: DR102DF



EN1433
CE



FUNCTION:

This product permits to drain run-off water with gratings of length 1000 mm, of class D400 complying with the standard NF-EN 1433, holding the CE marking, assembled via a male/female connection system with locking

DESCRIPTION:

It is comprised of:

- a injected recycled polypropylene black body
- two galvanized steel edges.
- two black cast iron gratings class D400
- two locking systems with galvanized metal bar



STDR10
SVDR10
SXDR10



NTDR102
NVDR102



PS100V
PS100X

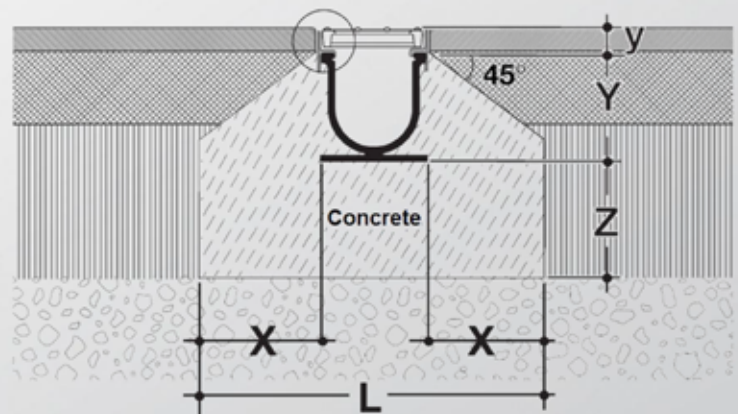
ACCESSORIES:

The connection to the sewage can be achieved through the following PVC fittings:

- End cap & inlet-outlet cap Ø100 or 110 – NTDR102 or NVDR102
- Vertical or lateral outlet Ø100, 110 or 125 – STDR10, SVDR10 or SXDR10
- Sump units Ø100 or 125 – PS100V or PS100X

CHARACTERISTICS:

Resistance class: D400
Effective width: 98 mm
Effective depth: 135 mm
Grating type: Cast iron
Drainage surface: 392 cm²/ml
Hydraulic section: 122 cm²
Opening dimensions: 18 / 96 mm
Weight: 16.3 Kg



IMPLEMENTATION:

X = 200 mm; L = 540 mm
Z = 200 mm; Y = 140 mm; y = 35 mm

QUALITY - ENVIRONMENT:

ISO 9001
ISO 14001
ISO 50001
BUREAU VERITAS
Certification



DATE: May 2014